

# A

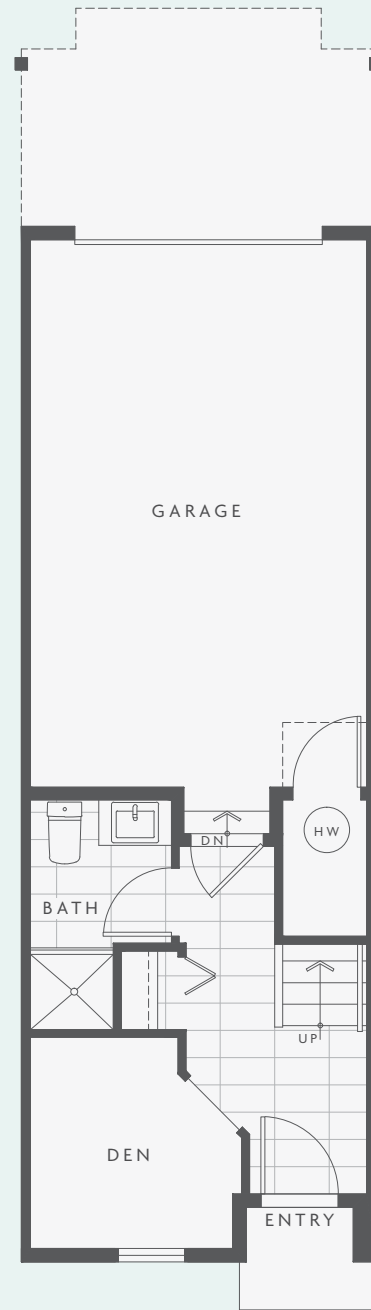
## 2 Bed + Den + 3 Bath

1,182 SQ FT (APPROX.)

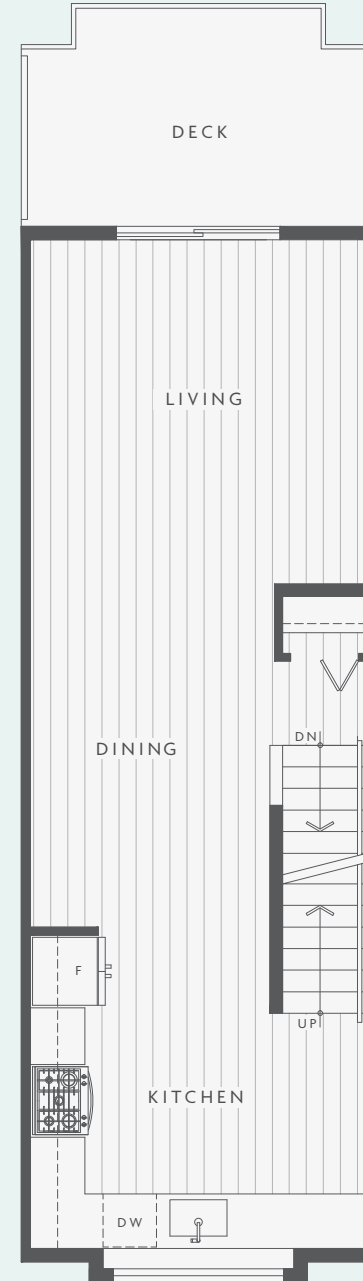
clayton  
walk



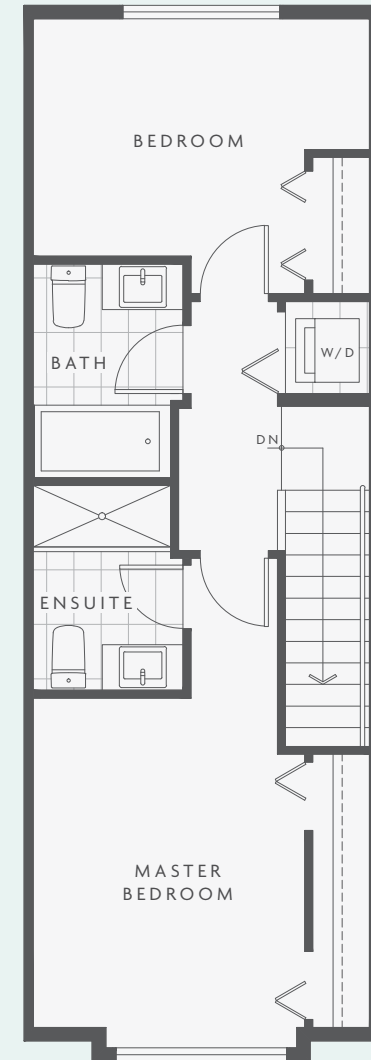
The developer (Anthem West Clayton Developments LP) reserves the right to make changes and modifications to the information contained herein. Floorplans and floorplates are subject to change without notice. Please contact a developer sales representative for details. This is not an offering for sale, as an offering can only be made after the filing of a disclosure statement, and only in jurisdictions where qualified in accordance with applicable local laws. E. & O.E.



LOWER



MAIN



UPPER